

Discipline Data Collection and Data Use in Connecticut

Connecticut State Department of Education

December 9, 2014

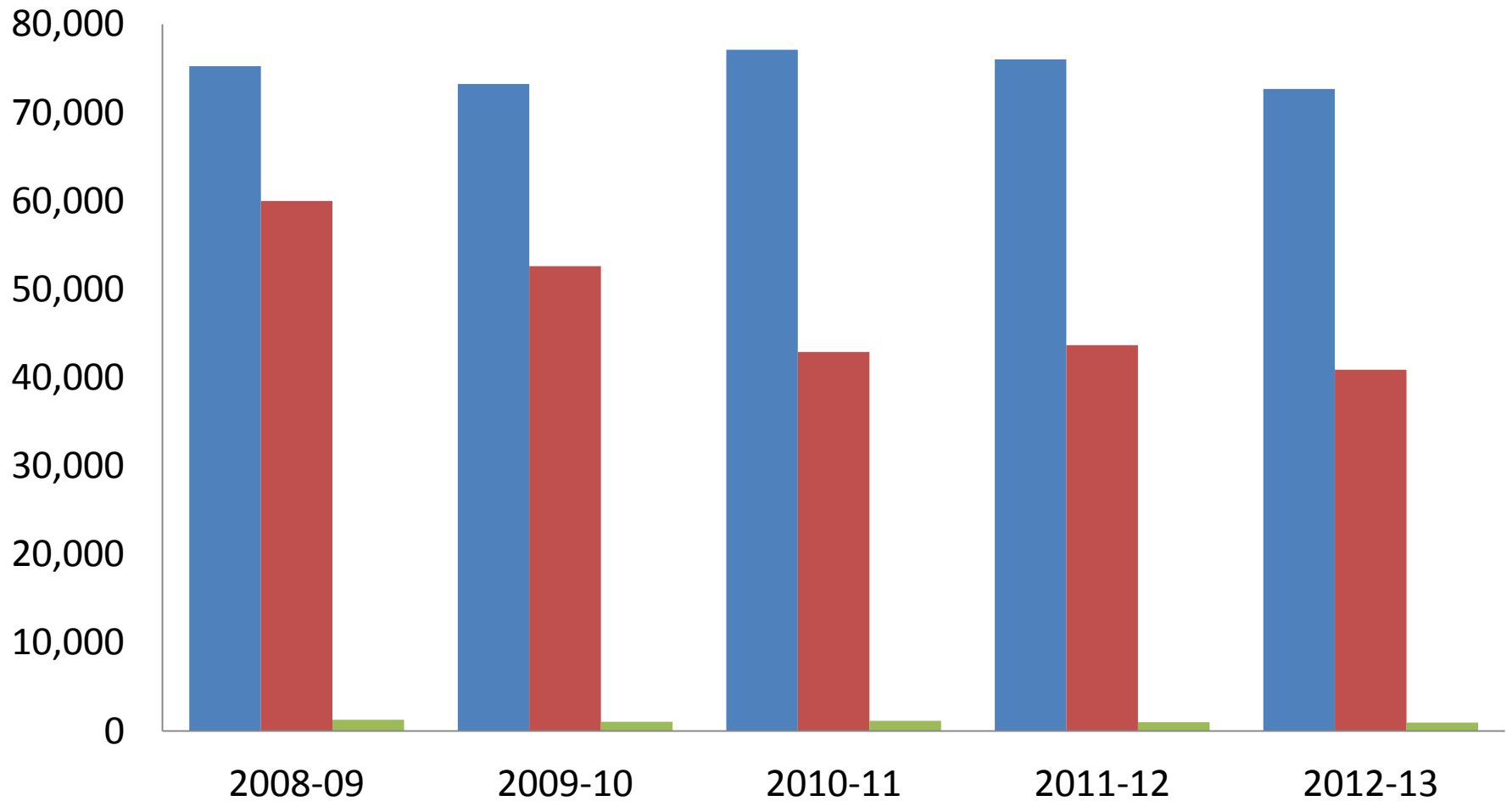


Data Collection and Reporting

- Student/Incident level
- Student
 - Unique state assigned student ID – allows for linkage to all other data about students (e.g., demographics, program characteristics, course participation, assessment, exit/graduation)
- Incident
 - Unique ID
 - Date, Time, Location (on/off campus list , other)
 - Over 100 possible incident types including bullying
 - Over 50 weapon types and over 30 substance types
 - Arrest
 - Victim
- Sanction
 - Over 30 sanction types
 - Length (days sanctioned, served, and carried over)

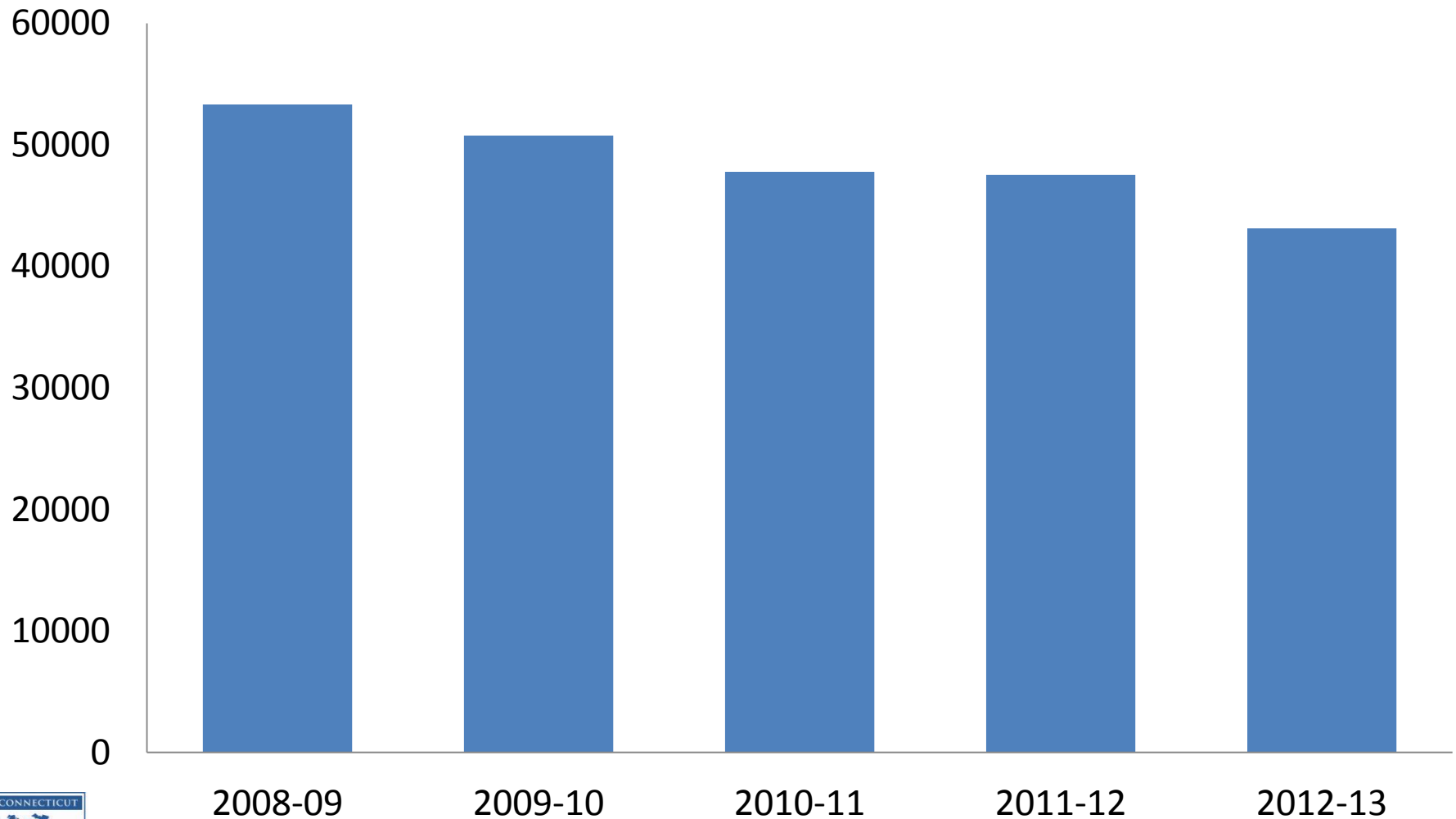


Total Number of Sanctions by ISS, OSS, and Expulsions (duplicated count)

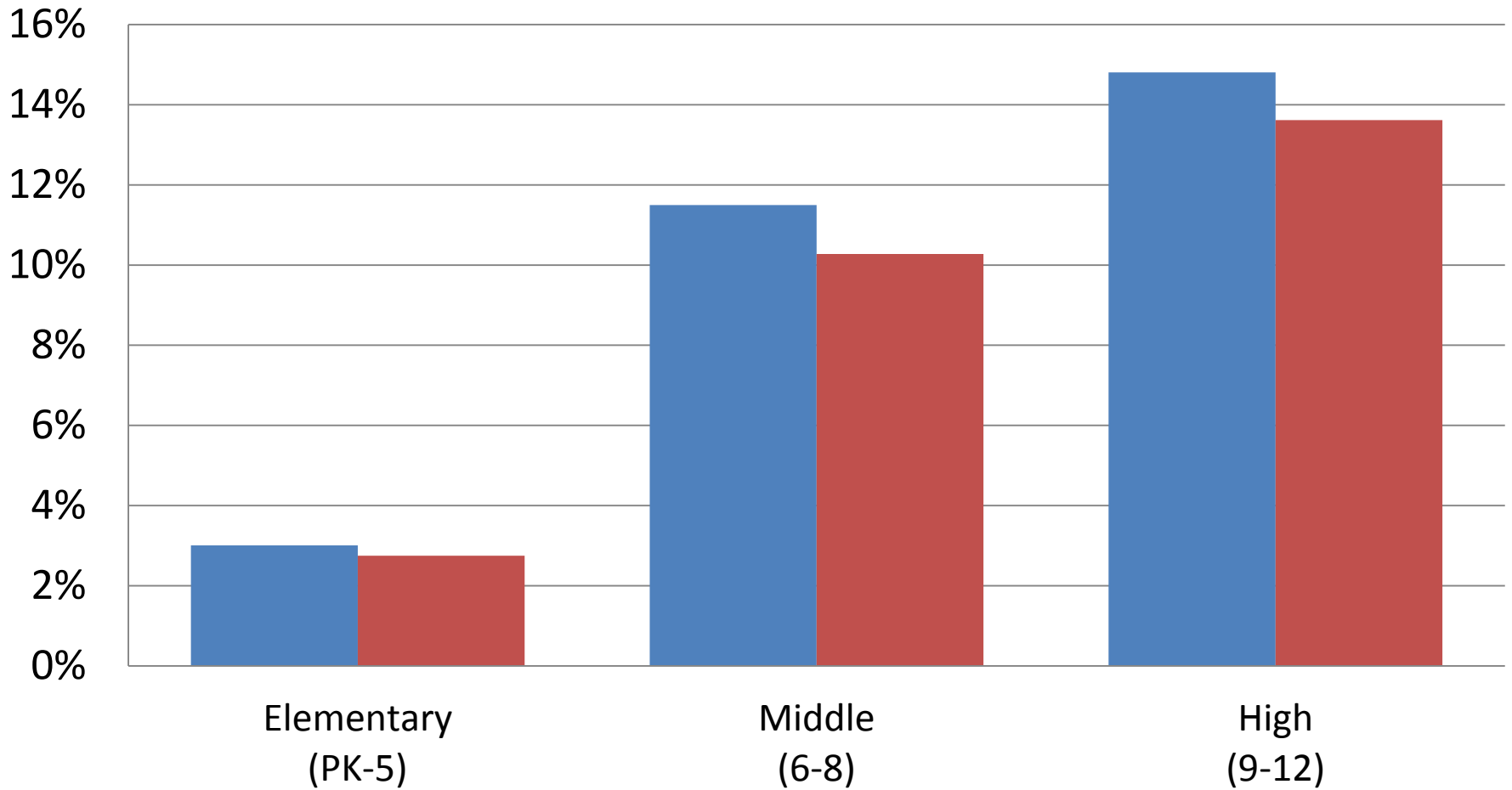


■ ISS ■ OSS ■ Expulsion

Total Number of Students Receiving at Least One ISS, OSS, or Expulsion (unduplicated count)

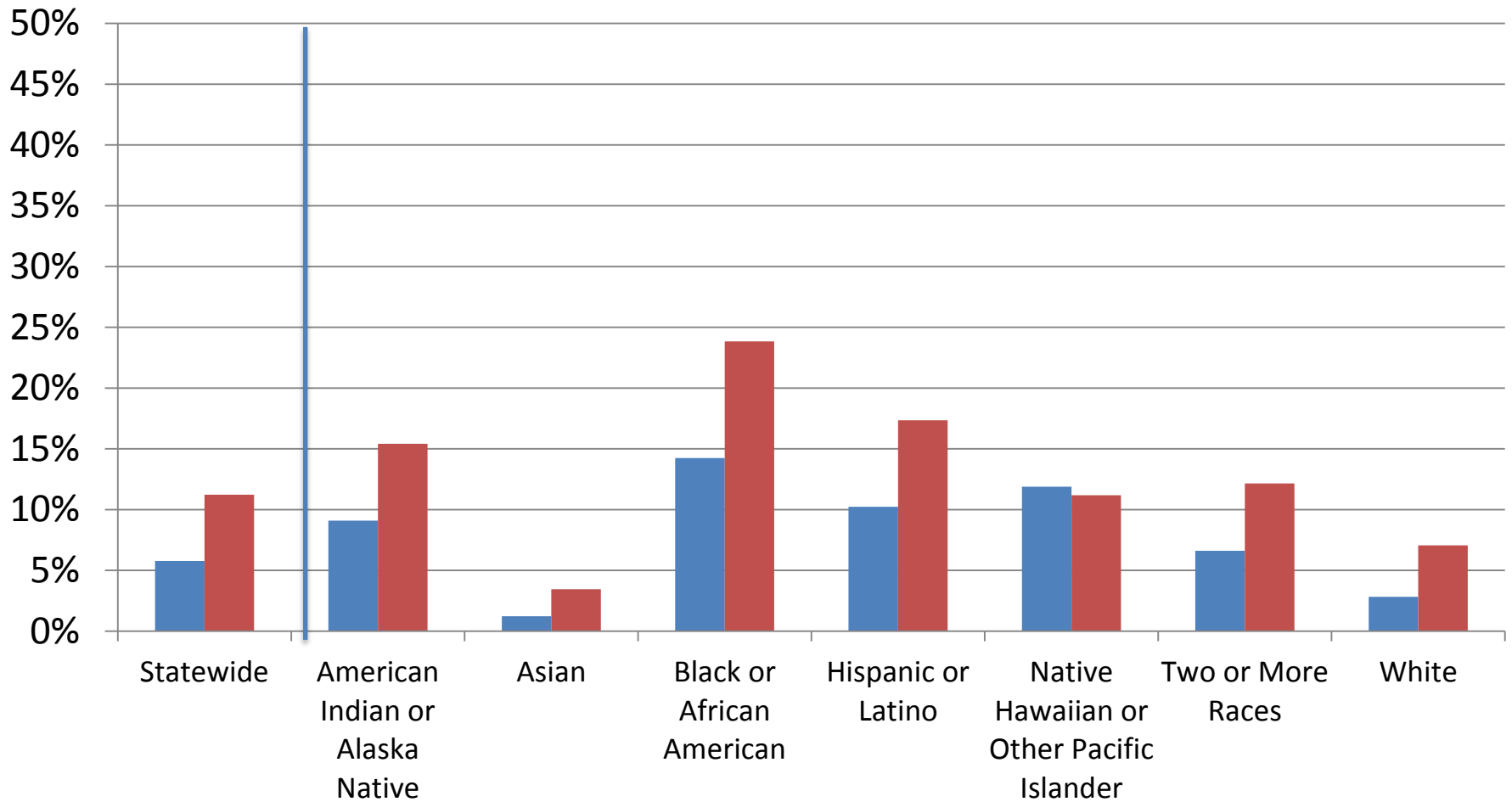


Suspension/Expulsion Rates by Grade Range



■ 2011-12 ■ 2012-13

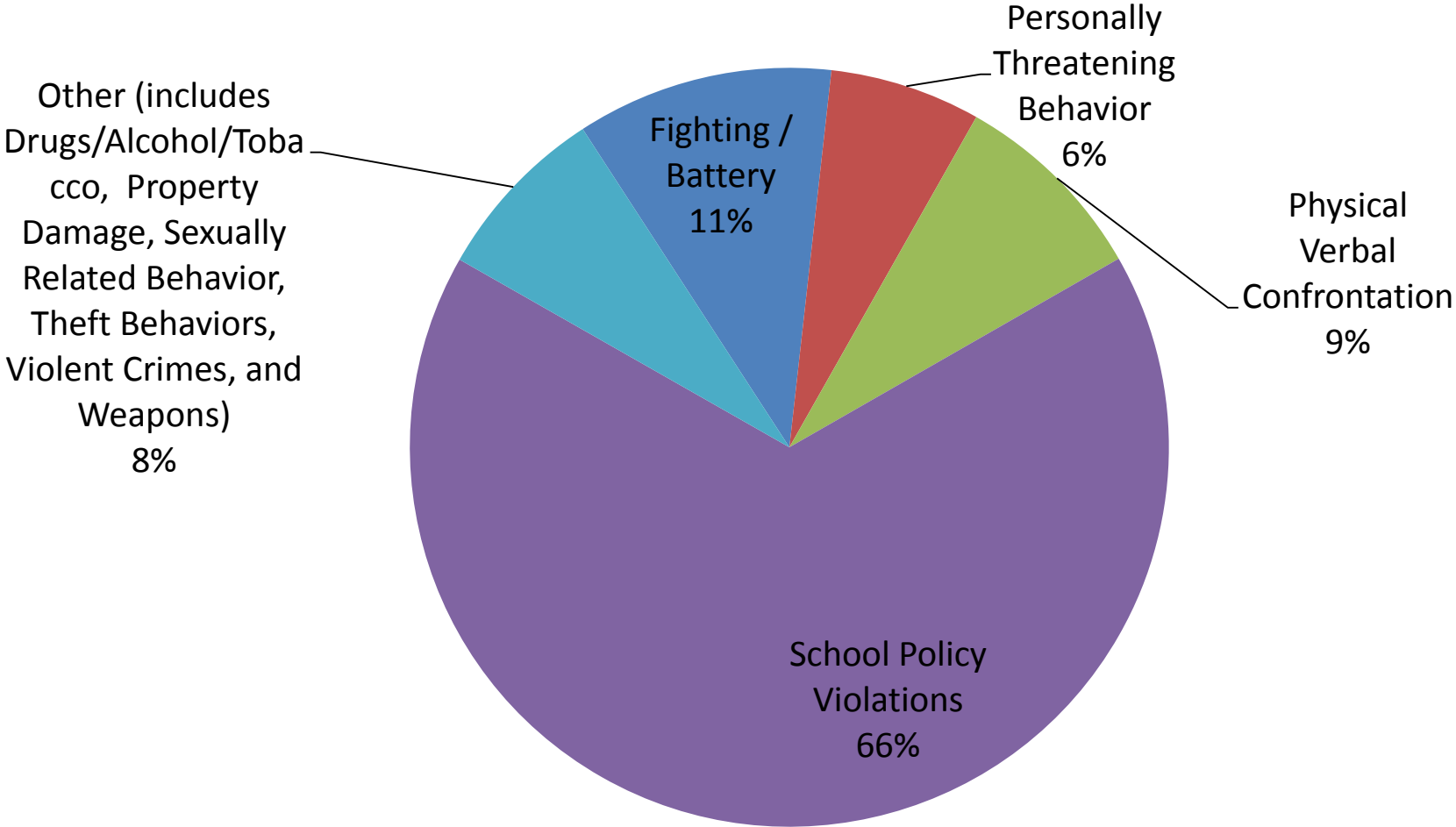
Suspension/Expulsion Rates by Race and Gender



■ Female ■ Male



Incident Types (Offenses) that Result in ISS, OSS or Expulsion

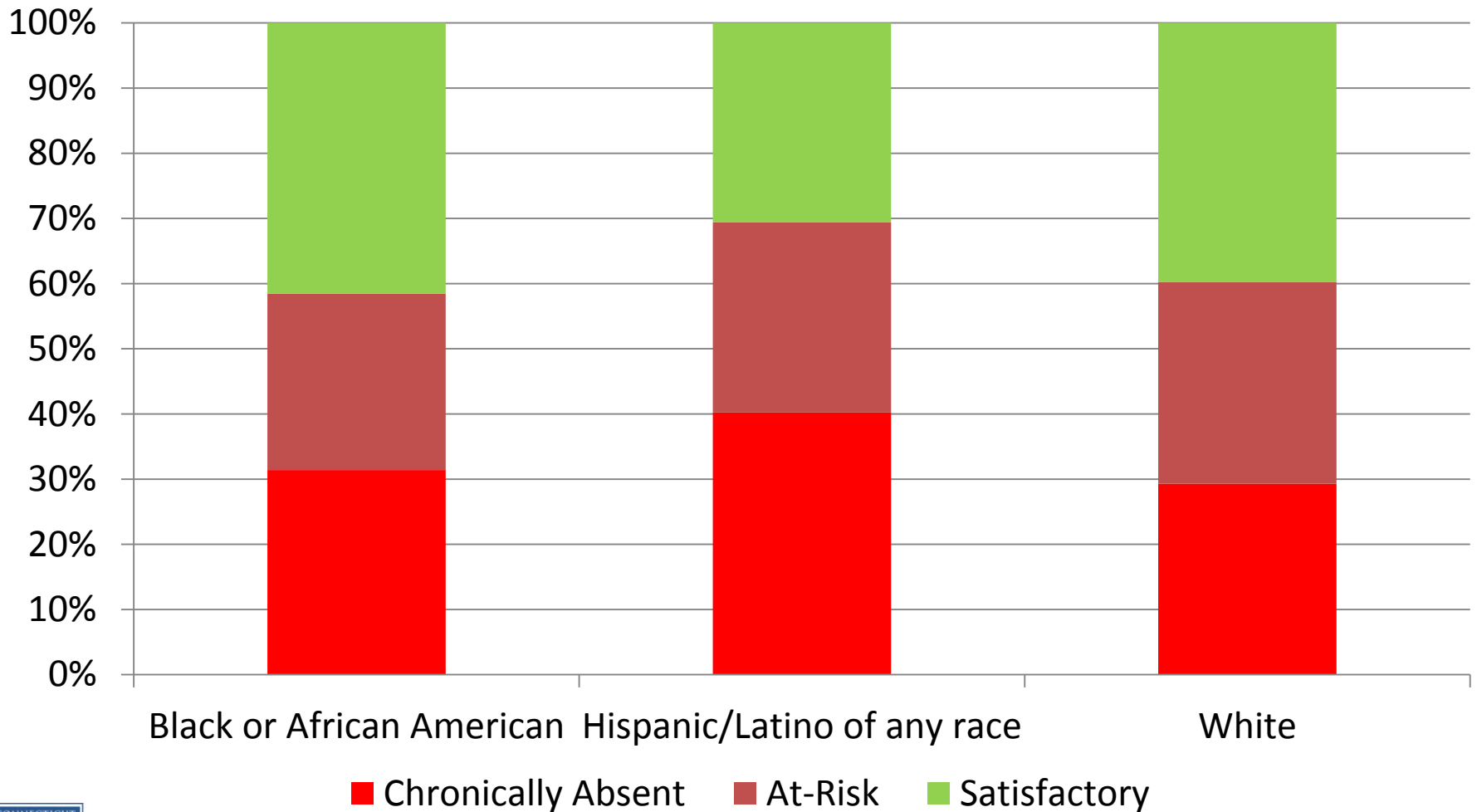


Average Number of Days Sanctioned

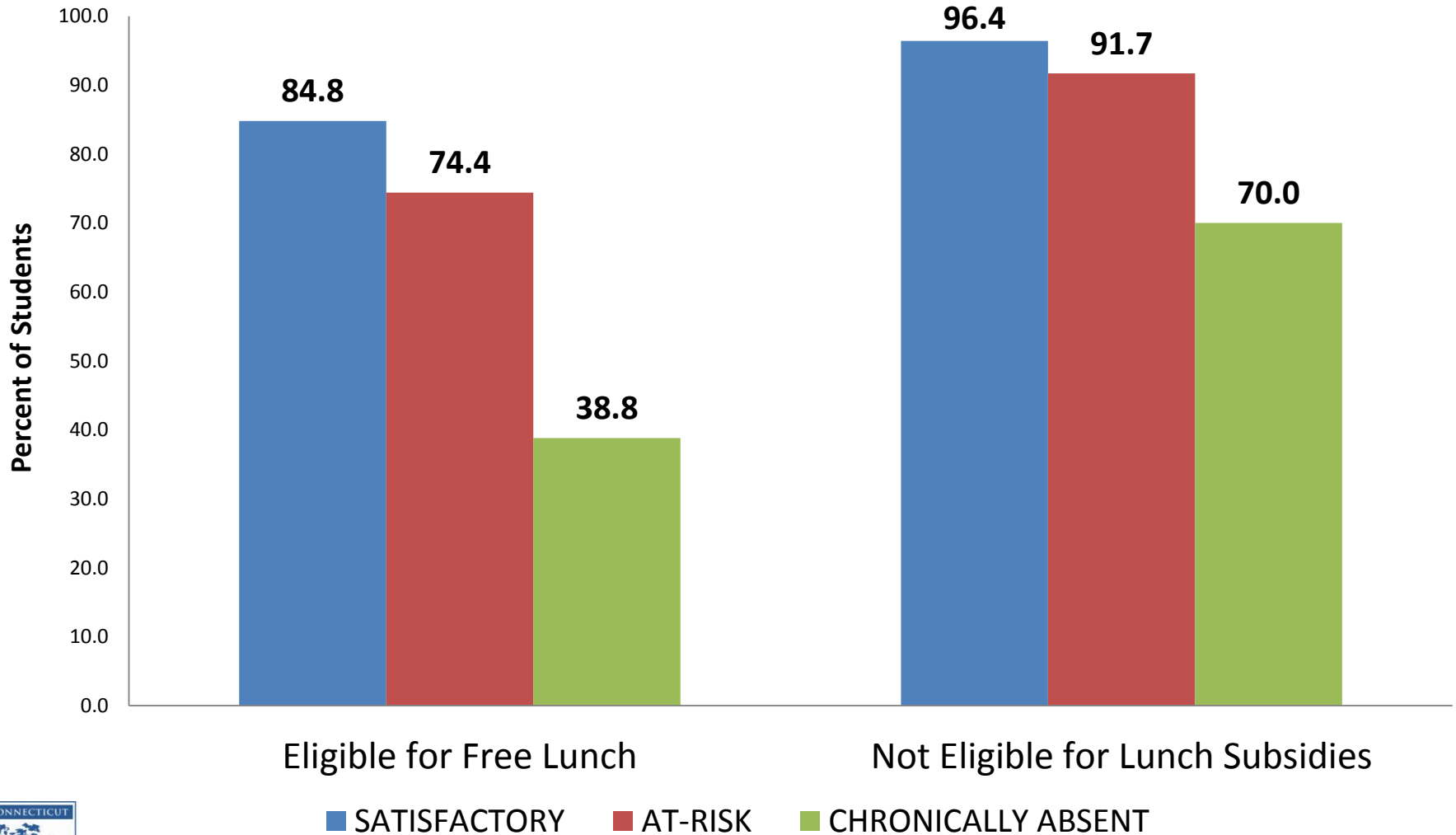
District	ISS	OSS	Expulsion
Ed-Reform	1.2	3.0	111.7
Non Ed-Reform Alliance	1.4	3.3	140.3
All Other Districts	1.4	3.7	124.6
RESC	1.4	2.4	163.5
Public Charters	1.0	1.6	58.1
Endowed Academies	1.6	4.3	85.0
CT Technical High Schools	1.5	4.9	67.1
State School Districts	2.9	3.6	-----
Statewide	1.3	3.1	116.3



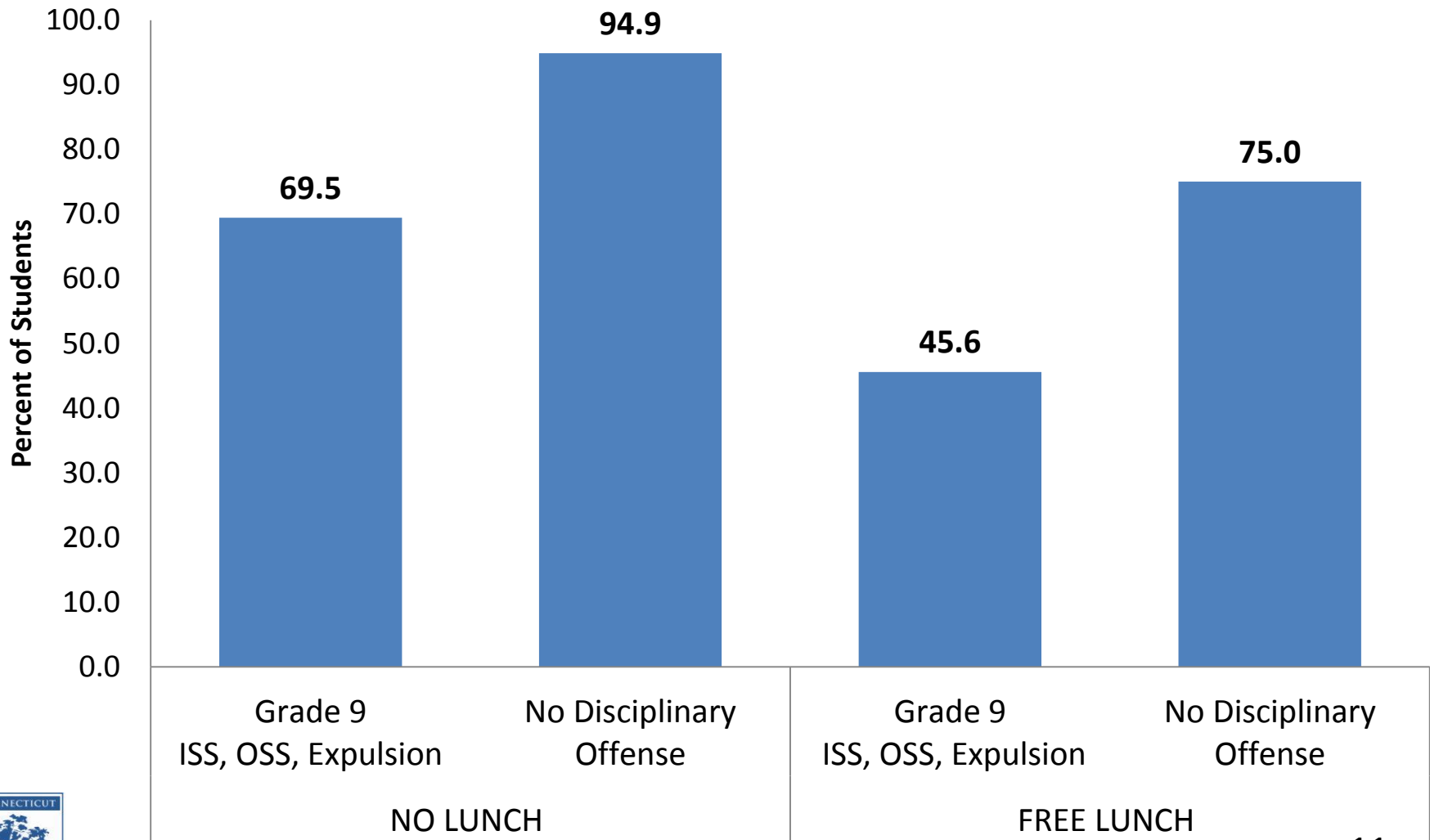
Attendance of Students Receiving ISS, OSS or Expulsion by Race: Percent of Students (unduplicated)



Attendance in 9th Grade and Graduation in 4 Years by Meal Eligibility



Discipline Offenses (ISS, OSS, Expulsion) in 9th Grade and Graduation in 4 Years by Lunch Eligibility



Partnerships and Interventions

- Positive and Effective Discipline Workgroup and Tiered System of Professional Learning Supports
- PBIS, school climate strategies, and quarterly data monitoring in “Alliance Districts” and “Commissioner’s Network Schools” through the Turnaround Office
- Research and Data Exchange with Judicial and Child Custody Agencies
- State Leadership Group following National Leadership Summit on School Discipline and Climate
- Continued Data Dissemination, Transparency, and Reports to the State Board of Education